

How to prevent disasters

Disasters can be caused by a lack of safety measures and inappropriate warning systems.

Sensorssoft offers low cost environmental monitoring products that can provide an early warning of problems that might escalate and cause downtime, damage and losses. As threatening conditions arise our sensor solutions can alert you via email and SMS; and trigger the appropriate corrective action.

Since your IT staff installs Sensorssoft products, you are in control of how the solution works. Because you manage the monitoring, monthly fees are non-existent. Sensorssoft products work seamlessly with your IT network, servers and modular wiring systems.

IP based technology

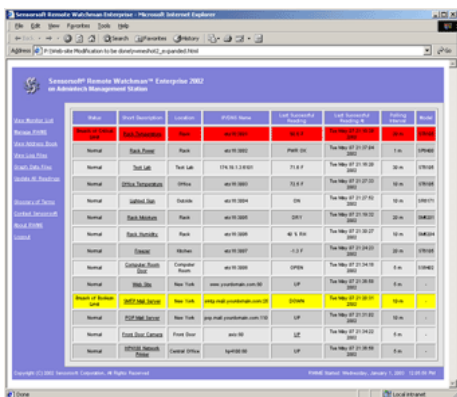
We allow you to remotely monitor temperature, humidity, water/flooding, power-loss, dry-contacts, security/safety detectors and live audio/video² at any location that has an IP connection (Internet, VPN, WAN, LAN).



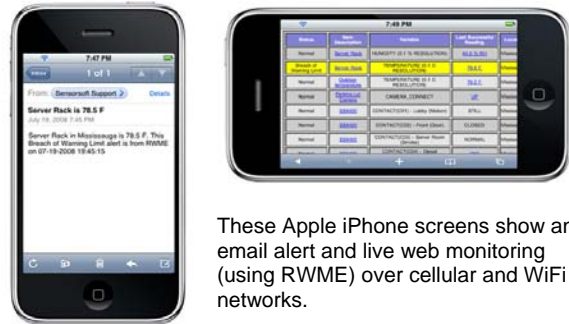
Using push email and SMS, Sensorsoft makes it possible to have live sensor readings sent immediately to your pager, cell phone or BlackBerry device when problems are emerging.

An easy to use web interface

We make it easy³ for you to login and manage your monitoring and alerting activities with a web browser.



Several of the new smart phones permit web access from anywhere - so that you can oversee a complete resolution of your environmental problem.



These Apple iPhone screens show an email alert and live web monitoring (using RWME) over cellular and WiFi networks.

More advanced customers will appreciate our solutions that support SNMP and XML. Our free .NET component is available for developers who want to write custom Windows applications that support Sensorsoft devices.

Applications

Sensorsoft solutions are used to protect¹ people, products, and equipment around the clock (24/7) from unforeseen problems. Some of the applications include:

- telecom, server and equipment rooms
- refrigerators/freezers used in hospitals, blood banks and cold chain storage
- nation-wide hotel facilities use it to monitor pool, spa temperatures and detect CO in dock areas
- live outdoor temperature readings used by TV broadcasters
- digital signage for advertising and public information systems
- monitoring systems for high-end yachts and pleasure boats

Two monitoring approaches

Sensorsoft offers two types of monitoring solutions: software driven and stand-alone network appliance.

Software driven

In this type of solution you use an existing computer to run our Linux, UNIX or Windows software. This approach has the flexibility to monitor from one to several thousand sensors. Our Windows based software (RWME), shown on the left, can monitor sensors, IP cameras, Sensorsoft appliances and web

/email servers. These solutions can record data log files with unlimited size.

Alerting action can take the form of email, SMS (TAP or GSM), command line execution, SNMP traps and AC power ON/OFF control.

Sensors can be connected directly to your computer's USB or RS232 ports. Remote sensors can be connected to our offering of 1 through 32 port IP Device Servers.



The Sensorsoft SSA7124 (24 Port) IP Device Server requires only an IP address to work. Sensors plug into

the RJ45 modular jacks and are auto-discovered. A sensor gets its power from the RJ45 port and can be located up to 1000 feet (300 m) from the device server using CAT5 cabling.

Stand-alone network appliance

Sensorsoft Alert is a network appliance that plugs directly into an IP network and monitors one sensor. Alerts are sent to you via email when problems occur. No software needs to be installed. A web browser is used to view the sensor reading and to manage the device. Due to a reliable Linux operating system this appliance can stay up for years without rebooting⁴.



Sensorsoft Alert appliance includes full SNMP and XML support.

A growing number of customers

Many have discovered the value of using our products. They include Cisco Systems, Facebook, Drury Inns, Intel, Yahoo, Netflix, Harvard, ABC, NBC, Citibank, ING, Siemens, US Navy, Hewlett Packard, Honeywell, HSBC, and Philips - to name a few.

From one to a thousand

Whether you are a small owner-operated company or a multi-national enterprise our solution fits and grows with you. Start small and grow your monitoring requirements as needed. A number of our customers have nation-wide monitoring systems based on Sensorsoft products.

Fifteen plus years of innovation and service

In 1998, we marketed our first PC based temperature monitoring product under the Sensorsoft name. Today we have over 75 products, most, that are in stock and ready for delivery - worldwide.

A green company

Sensorsoft customers are still using sensors they purchased ten years ago. Unlike manufacturers that rely on planned obsolescence, we do not prevent you from using older products. Our emphasis is on reuse, recycling and green industry initiatives like RoHS and lead-free products.



A video shot from the Sensorsoft Parking Lot. This IP Network Camera is being monitored by Sensorsoft RWME software.

Better safe than sorry

If you have a temperature or environmental problem, don't wait any longer. Purchase one of our low-cost risk-free solution packs (**starting at \$199 US**) and solve your problem today.

Sensorsoft Corporation
5045 Orbitor Drive, Suite 200, Bldg 11
Mississauga, Ontario L4W 4Y4 Canada

Web: <http://www.sensorsoft.com>

Please contact us or our authorized Sensorsoft reseller below for more details on our products and how they can help you achieve your goals.



Copyright © 2008-2016 Sensorsoft Corporation
BlackBerry is a trademark of Blackberry Limited. iPhone is a trademark of Apple Inc. Sensorsoft, Alert and Remote Watchman are trademarks of Sensorsoft Corp.

¹ Under no circumstances is Sensorsoft Corporation liable for any of the following: (1) third-party claims against you for losses or damages; (2) loss of, or damage to your records, data or computer equipment; or (3) special, incidental or indirect damages or for any economic consequential damages (including lost profits or savings).

² Audio/video monitoring requires a high data rate IP connection (2 Mbps or greater).

³ Installation and setup requires a skilled IT person.

⁴ A battery backed UPS is required.