

Remotely Control Equipment with the Sensorsoft Relay



SR6171J Sensorsoft® Relay

The Sensorsoft protocol based Relay is a low cost device for switching equipment at a remote location, ON or OFF, using your Windows PC or UNIX workstation.

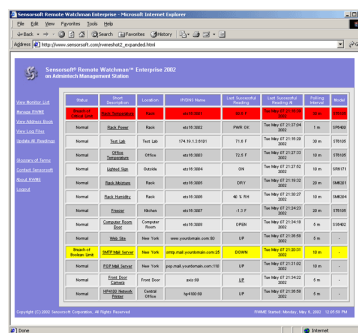
Equipment without remote control features sometimes require to be controlled remotely in order to avoid the need for expensive trips to a remote location or help from on-site personnel. Developing a solution to solve this type of problem often involves an engineer who can create custom software and hardware. The use of X-10 devices for this purpose has been known to fail during electrical interference making them unusable in a business critical environment. The Sensorsoft Relay is a simple and reliable way to use your computer to restart or turn ON/OFF equipment without the need for remote operators or time consuming trips to a remote location.

The Sensorsoft Relay connects via cable to a serial port on your computer and can be located up to a thousand feet away without the need for a battery or *external power adapter. This Sensorsoft device, like all of our sensors, uses our unique Sensorsoft auto discovery protocol that insures a quick and easy installation without set-up or data communication errors. The Sensorsoft Relay can be used to control **AC or DC devices using its DPDT (Double Pole Double Throw) relay contacts.

Our software provides a convenient way to display the ON/OFF state of your remote equipment and set the desired state you want with your computer.

Features

- Computer connectivity - make equipment & appliances part of your network
- Display and control the current ON/OFF state of equipment
- Control *AC/DC, low or high voltage equipment with SPDT contacts
- Continually monitor and log state readings to a file
- Connects to any RS232 serial port
- Windows and UNIX software available
- Plug and go operation, no setup required
- Sensorsoft Relay uses a 16 bit CRC scheme to insure reliable operation
- Locate the Sensorsoft Relay up to 1000 ft. from computer



Sensorsoft Remote Watchman Enterprise

Applications

- Electronic door locks
- Re-boot or re-start locked-up equipment
- Remote control of experiments
- Computerized device control
- Managing power consuming devices
- Building management
- Remote sheds

Specifications

Control Capabilities: Can switch ON or OFF most small AC/DC powered equipment or loads.
Internal relay type: DPDT electromagnetic relay available through terminal strip.
Relay contact resistance: 50 milliohm max
Relay contact load rating: 2 Amp at 30 VDC, 0.5 Amp at 125 VAC, for resistive loads (p.f.=1)
Maximum contact operating voltage: 125 VAC/125 VDC
Maximum contact operating current: 2 Amp
Maximum contact switching capacity: 60W, 62.5 VA
Operating temperature range: -25 °C to +60 °C (-13 °F to +140 °F)
Maximum reading or control rate: once every second
Housing dimensions: 10 cm (3.9") x 5 cm (2.0") x 2.48 cm (0.97")
Housing material: injection molded ABS thermoplastic
Housing colour: light gray
Communications connector: 8 position modular jack, (accepts 8 position plug RJ45)
Power source: Port-powered (RTS and DTR, both asserted) or via External DC power connector
External DC power connector: 2.1 mm power jack, automatic polarity correction and over-voltage protection.
External power supply voltage: 9.0 - 12.0 VDC
Power supply current drain: < 15 mA
Communications interface: RS232C using TX,RX,RTS,DTR and GND. One device per serial port.
Maximum communications cable length: 305 m (1000 ft.) using recommended cable type. Low capacitance shielded cable or UTP is recommended.
Communications Protocol: Sensorsoft Device Protocol, Version 2.0
Error control: 16 bit CRC (cyclic redundancy checking) for detection of communication errors between the Sensorsoft Relay and host computer.

For more information and up-to-date pricing on this product and other products that Sensorsoft offers please visit our web site at www.sensorsoft.com.

* AC adapter is required to hold the relay's state if the serial port is closed. Some serial ports may not be able to power the Sensorsoft Relay.

**Using the Sensorsoft Relay with high voltage AC or DC equipment requires a qualified electrician for safe hook up.

Sensorsoft, SCOM and Remote Watchman are trademarks of Sensorsoft Corporation.



6375 Dixie Road, Units 1 & 2
Mississauga, Ontario L5T 2E7
Tel: 905-564-0690